



Age by Sex Profile

Haysville City, KS
 Haysville City, KS (2031125)
 Geography: Place

Prepared by Esri

Summary	Census 2010	2021	2026	2021-2026 Change	2021-2026 Annual Rate
Population	10,838	11,172	11,374	202	0.36%
Households	3,862	3,978	4,044	66	0.33%
Average Household Size	2.78	2.78	2.79	0.01	0.07%
Median Age	32.9	35.7	35.9	0.2	0.11%
Median Male Age	32.3	34.7	34.8	0.1	0.06%
Median Female Age	33.6	36.7	37.0	0.3	0.16%

Total Population by Age	Census 2010		2021		2026	
	Number	Percent	Number	Percent	Number	Percent
Total	10,838	100.0%	11,173	100.0%	11,374	100.0%
0 - 4	848	7.8%	802	7.2%	816	7.2%
5 - 9	899	8.3%	803	7.2%	826	7.3%
10 - 14	963	8.9%	790	7.1%	831	7.3%
15 - 19	899	8.3%	732	6.6%	727	6.4%
20 - 24	635	5.9%	721	6.5%	638	5.6%
25 - 29	733	6.8%	867	7.8%	801	7.0%
30 - 34	753	6.9%	756	6.8%	913	8.0%
35 - 39	741	6.8%	777	7.0%	770	6.8%
40 - 44	690	6.4%	691	6.2%	750	6.6%
45 - 49	695	6.4%	639	5.7%	662	5.8%
50 - 54	660	6.1%	623	5.6%	600	5.3%
55 - 59	560	5.2%	640	5.7%	590	5.2%
60 - 64	447	4.1%	654	5.9%	588	5.2%
65 - 69	354	3.3%	516	4.6%	595	5.2%
70 - 74	308	2.8%	427	3.8%	456	4.0%
75 - 79	279	2.6%	286	2.6%	357	3.1%
80 - 84	196	1.8%	220	2.0%	217	1.9%
85+	178	1.6%	229	2.0%	237	2.1%
18+	7,544	69.6%	8,334	74.6%	8,453	74.3%
21+	7,104	65.5%	7,896	70.7%	8,032	70.6%

Total Population by Age Dependency	Census 2010		2021		2026	
	Number	Percent	Number	Percent	Number	Percent
Total	10,838	100.0%	11,173	100.0%	11,374	100.0%
Child (<18)	3,294	30.4%	2,837	25.4%	2,920	25.7%
Working-Age (18-64)	6,229	57.5%	6,656	59.6%	6,591	57.9%
Senior (Age 65+)	1,315	12.1%	1,678	15.0%	1,862	16.4%
Child Dependency Ratio	52.9	-	42.6	-	44.3	-
Age Dependency Ratio	74.0	-	67.8	-	72.6	-
Senior Dependency Ratio	21.1	-	25.2	-	28.3	-

Data Note: Detail may not sum to totals due to rounding. Dependency ratios represent the number of dependents per 100 persons of the working-age population aged 18 to 64.

Source: U.S. Census Bureau, Census 2010 Summary File 1. Esri forecasts for 2021 and 2026.



Age by Sex Profile

Haysville City, KS
 Haysville City, KS (2031125)
 Geography: Place

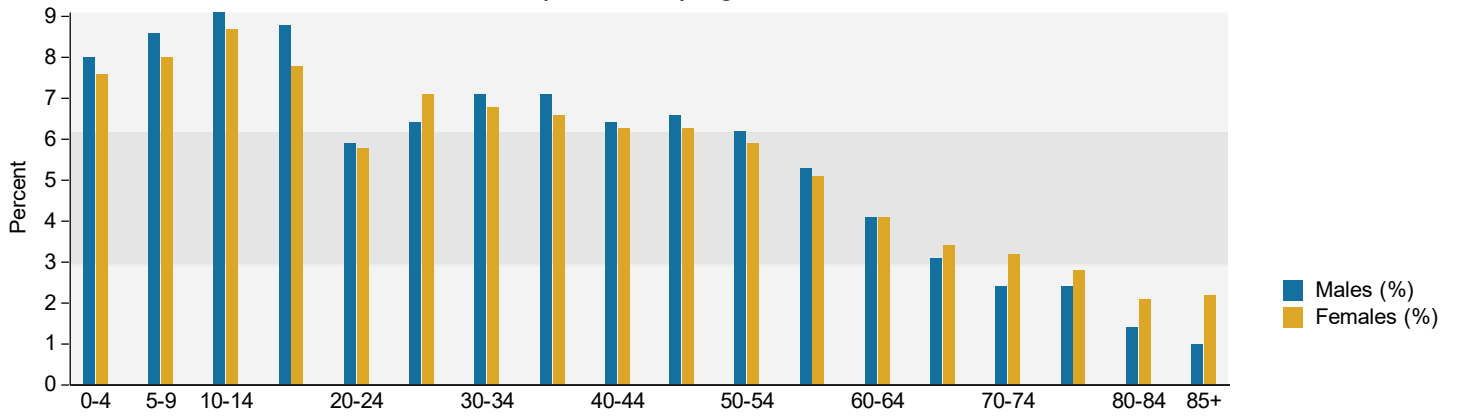
Prepared by Esri

Male Population by Age	Census 2010		2021		2026	
	Number	Percent	Number	Percent	Number	Percent
Total	5,207	100.0%	5,397	100.0%	5,500	100.0%
0 - 4	418	8.0%	402	7.4%	411	7.5%
5 - 9	449	8.6%	406	7.5%	417	7.6%
10 - 14	473	9.1%	406	7.5%	423	7.7%
15 - 19	457	8.8%	362	6.7%	376	6.8%
20 - 24	307	5.9%	348	6.4%	304	5.5%
25 - 29	333	6.4%	430	8.0%	383	7.0%
30 - 34	369	7.1%	370	6.9%	457	8.3%
35 - 39	369	7.1%	356	6.6%	375	6.8%
40 - 44	335	6.4%	336	6.2%	344	6.3%
45 - 49	342	6.6%	314	5.8%	321	5.8%
50 - 54	325	6.2%	301	5.6%	296	5.4%
55 - 59	274	5.3%	315	5.8%	281	5.1%
60 - 64	216	4.1%	318	5.9%	288	5.2%
65 - 69	161	3.1%	250	4.6%	285	5.2%
70 - 74	127	2.4%	195	3.6%	213	3.9%
75 - 79	123	2.4%	121	2.2%	159	2.9%
80 - 84	75	1.4%	88	1.6%	86	1.6%
85+	54	1.0%	79	1.5%	81	1.5%
18+	3,569	68.5%	3,962	73.4%	4,015	73.0%

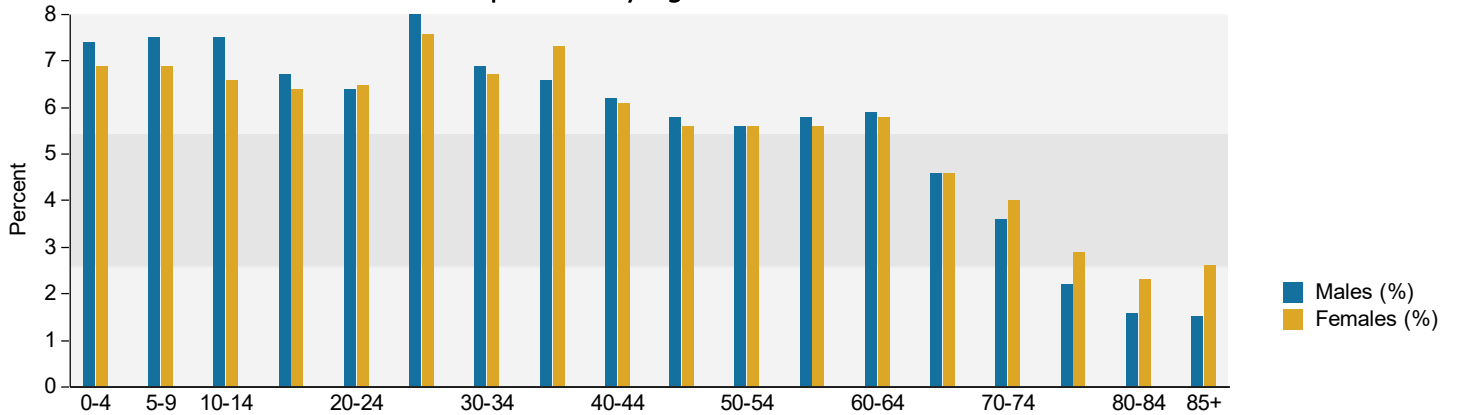
Female Population by Age	Census 2010		2021		2026	
	Number	Percent	Number	Percent	Number	Percent
Total	5,631	100.0%	5,776	100.0%	5,874	100.0%
0 - 4	430	7.6%	400	6.9%	405	6.9%
5 - 9	450	8.0%	397	6.9%	409	7.0%
10 - 14	490	8.7%	384	6.6%	408	6.9%
15 - 19	442	7.8%	370	6.4%	351	6.0%
20 - 24	328	5.8%	373	6.5%	334	5.7%
25 - 29	400	7.1%	437	7.6%	418	7.1%
30 - 34	384	6.8%	386	6.7%	456	7.8%
35 - 39	372	6.6%	421	7.3%	395	6.7%
40 - 44	355	6.3%	355	6.1%	406	6.9%
45 - 49	353	6.3%	325	5.6%	341	5.8%
50 - 54	335	5.9%	322	5.6%	304	5.2%
55 - 59	286	5.1%	325	5.6%	309	5.3%
60 - 64	231	4.1%	336	5.8%	300	5.1%
65 - 69	193	3.4%	266	4.6%	310	5.3%
70 - 74	181	3.2%	232	4.0%	243	4.1%
75 - 79	156	2.8%	165	2.9%	198	3.4%
80 - 84	121	2.1%	132	2.3%	131	2.2%
85+	124	2.2%	150	2.6%	156	2.7%
18+	3,975	70.6%	4,372	75.7%	4,438	75.6%

Source: U.S. Census Bureau, Census 2010 Summary File 1. Esri forecasts for 2021 and 2026.

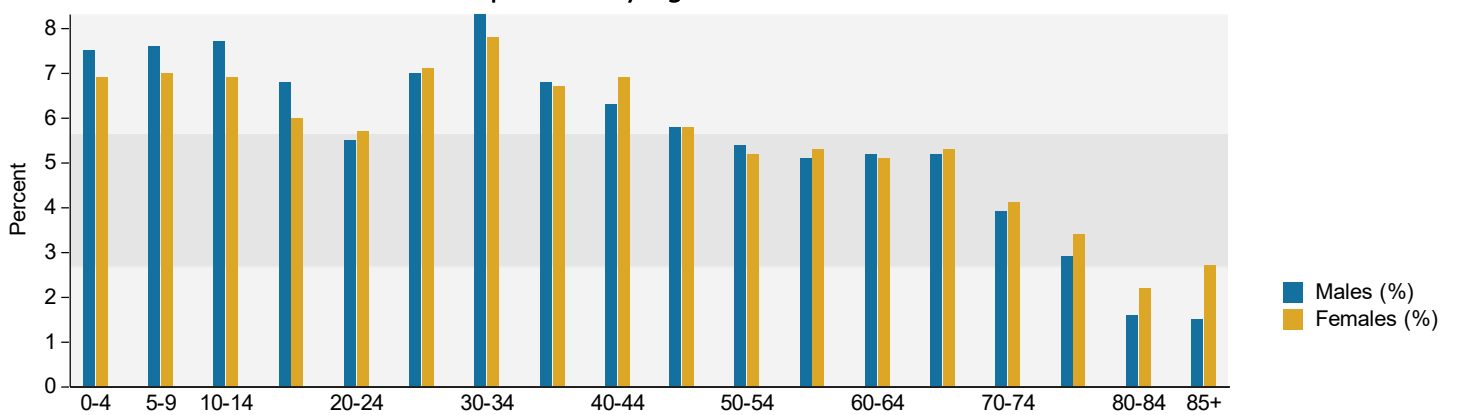
Census 2010 Population by Age and Sex



2021 Population by Age and Sex



2026 Population by Age and Sex



Source: U.S. Census Bureau, Census 2010 Summary File 1. Esri forecasts for 2021 and 2026.